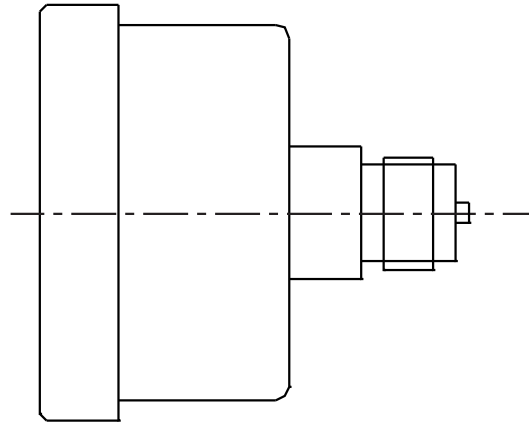
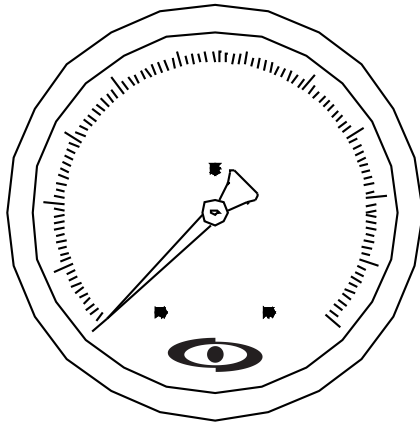


BACK CONN. DIRECT MOUNTING PRESSURE GAUGE APG 1001-D



Dial Size	Case & Bezel	Mounting	Range	Connection	Pressure Element	Element M.O.C.	Movement	Electrical Contact	Accessories	Accuracy
01 40 mm 02 50mm 03 65 mm 04 100 mm 05 150 mm	01 Cast Aluminium Screw Type 02 A : SS 304 / B : 316 A : Bayonet Type / B: Press Type	01 Back conn. - Direct Mounting								01 1%, 02 1.6% 03 2%, 04 2.5%
Please Refer Table										
05 1/4" BSP 05A 1/4" NPT 01 3/8" BSP 01A 3/8" NPT 02 1/2" BSP 02A 1/2" NPT. xx Others										
06 Bourdon Tube										01 Syphon Pig tail type 02 Syphon "U" type 03 Snubber 04 Gauge Saver 05 Gauge Cock 06 Needle Valves 07 Manifolds 08 Pointer Puller # Pls. Specify MOC & Thread.
01 SS 316										
01 SS 304										
01 Magnetic Contact Rated for 1 Amp. 230V AC 02 Slide Contact Rated for 200 mA. 230V AC <input type="checkbox"/> 1 N/O <input type="checkbox"/> 1N/C <input type="checkbox"/> 2 N/O <input type="checkbox"/> 2 N/C (Note : Only For 4" & 6" Size Gauges)										
APG 1001-D										

Corporate & Mktg. Office : 165, G.I.D.C. Makarpura, Vadodara 390 010. **Tel. :** +91 - 265 - 2643550, 2646021.
Fax : + 91 - 265 - 2641054 ■ **E-mail :** marketing@altopindustries.com

Factory : 392 , 419-A, GIDC, Makarpura, Vadodara - 390 010.
Tel. : 0265-2658480 ■ **E-mail :** support@altopindustries.com

MUMBAI : 5, Turakhia Park Shopping Complex, Building No. 1, Next to Corporation Bank, M. G. Road, Kandivali (W), MUMBAI - 400 067. ■ **Tel. :** (022) 2806 6032 / 2806 6036 ■ **Fax :** (022) 2862 9113
 ■ **Email :** bombay@altopindustries.com