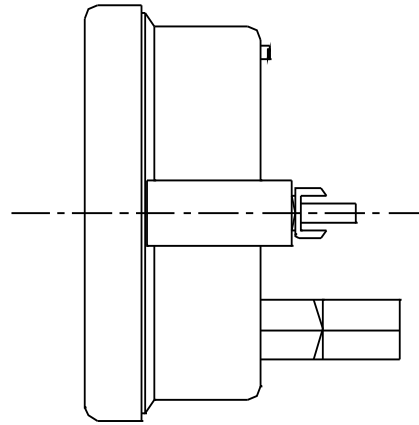
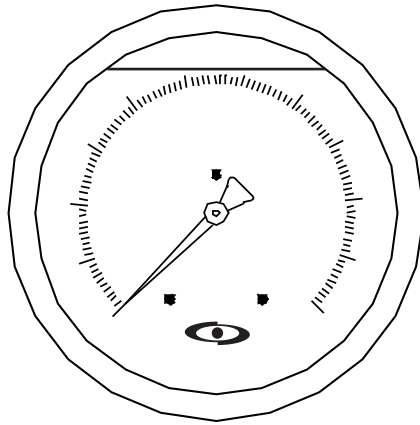


BACK CONN. BRACKET MOUNTING GLYCERINE FILLED PRESSURE GAUGE APG 1007-B



Dial Size	Case & Bezel	Mounting	Range	Connection	Pressure Element	Element M.O.C.	Movement	Accessories	Accuracy
01 50mm 02 65 mm 03 100 mm 04 150 mm	01 Cast Aluminium Screwed Type 02 A : SS 304 / B : 316 A : Bayonet Type / B : Press Type	01 Back conn. Panel Mounting with Bracket							01 1%, 02 1.6% 03 2%, 04 2.5%
		Please Refer Table							
				05 1/4" BSP 05A 1/4" NPT 01 3/8" BSP 01A 3/8" NPT 02 1/2" BSP 02A 1/2" NPT. xx Others				01 Syphon Pig tail type 02 Syphon "U" type 03 Snubber 04 Gauge Saver 05 Gauge Cock 06 Needle Valves 07 Manifolds 08 Pointer Puller # Pls. Specify MOC & Thread.	
		06 Bourdon Tube							
		01 SS 316							
		01 SS 304							
APG 1007-B									

An ISO 9001 : 2008 company

Corporate & Mktg. Office : 165, G.I.D.C. Makarpura, Vadodara 390 010. **Tel. :** +91 - 265 - 2643550, 2646021.
Fax : + 91 - 265 - 2641054 ■ **E-mail :** marketing@altopindustries.com

Factory : 392 , 419-A, GIDC, Makarpura, Vadodara - 390 010.
Tel. : 0265-2658480 ■ **E-mail :** support@altopindustries.com

MUMBAI : 5, Turakhia Park Shopping Complex, Building No. 1, Next to Corporation Bank, M. G. Road, Kandivali (W), MUMBAI - 400 067. ■ **Tel. :** (022) 2806 6032 / 2806 6036 ■ **Fax :** (022) 2862 9113
Email : bombay@altopindustries.com



ALTOP Industries Ltd.
PROCESS CONTROL INSTRUMENTATION

CIN - U91110GJ1993PLC018831

<http://www.altopindustries.com>