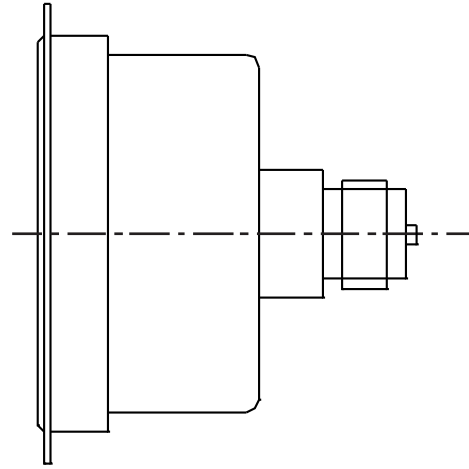
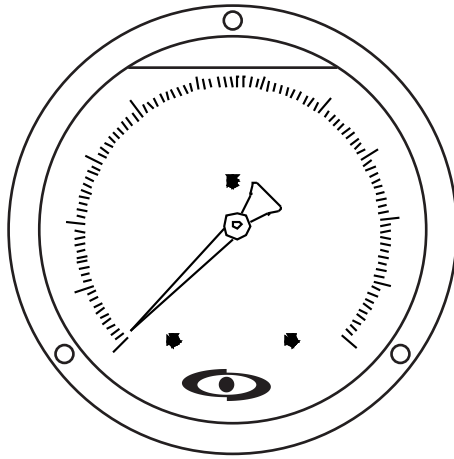


# BACK CONN. PANEL MOUNTING GLYCERINE PRESSURE GAUGE APG 1007-C



Dial Size	Case & Bezel	Mounting	Range	Connection	Pressure Element	Element M.O.C.	Movement	Accessories	Accuracy
03 65 mm 04 100 mm 05 150 mm	01 Cast Aluminium Screwed Type 02 A : SS 304 / B : 316 A : Bayonet Type / B : Press Type	01 Back Conn. - Panel Mounting							01 1%, 02 1.6% 03 2%, 04 2.5%
		Please Refer Table							
05 1/4" BSP 05A 1/4" NPT 01 3/8" BSP 01A 3/8" NPT 02 1/2" BSP 02A 1/2" NPT. xx Others									
06 Bourdon Tube									
01 SS 316									
01 SS 304									
APG 1007-C									

- 01 Syphon Pig tail type
- 02 Syphon "U" type
- 03 Snubber
- 04 Gauge Saver
- 05 Gauge Cock
- 06 Needle Valves
- 07 Manifolds
- 08 Pointer Puller
- # Pls. Specify MOC & Thread.

An ISO 9001 : 2008 company

**Corporate & Mktg. Office :** 165, G.I.D.C. Makarpura, Vadodara 390 010. **Tel. :** +91 - 265 - 2643550, 2646021.  
**Fax :** + 91 - 265 - 2641054 **E-mail :** marketing@altopindustries.com

**Factory :** 392 , 419-A, GIDC, Makarpura, Vadodara - 390 010.  
**Tel. :** 0265-2658480 **E-mail :** support@altopindustries.com

**MUMBAI :** 5, Turakhia Park Shopping Complex, Building No. 1, Next to Corporation Bank, M. G. Road, Kandivali (W), MUMBAI - 400 067. **Tel. :** (022) 2806 6032 / 2806 6036 **Fax :** (022) 2862 9113  
**Email :** bombay@altopindustries.com

**ALTOP Industries Ltd.**  
 PROCESS CONTROL INSTRUMENTATION  
 CIN - U91110GJ1993PLC018831  
<http://www.altopindustries.com>