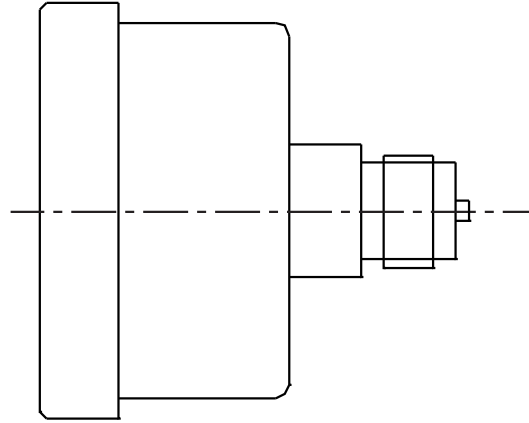
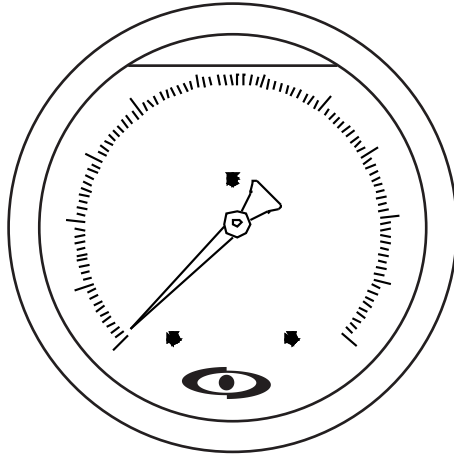


# BACK CONN. DIRECT MOUNTING GLYCERINE FILLED PRESSURE GAUGE APG 1007-D



Dial Size	Case & Bezel	Mounting	Range	Connection	Pressure Element	Element M.O.C.	Movement	Accessories	Accuracy
01 40 mm 02 50mm 03 65 mm 04 100 mm 05 150 mm	01 Cast Aluminium Screwed Type 02 A : SS 304 / B : 316 A : Bayonet Type / B : Press Type	01 Back conn. - Direct Mounting	Please Refer Table						01 1%, 02 1.6% 03 2%, 04 2.5%
				05 1/4" BSP 05A 1/4" NPT 01 3/8" BSP 01A 3/8" NPT 02 1/2" BSP 02A 1/2" NPT. xx Others				01 Syphon Pig tail type 02 Syphon "U" type 03 Snubber 04 Gauge Saver 05 Gauge Cock 06 Needle Valves 07 Manifolds 08 Pointer Puller # Pls. Specify MOC & Thread.	
				06 Bourdon Tube					
				01 SS 316					
				01 SS 304					
APG 1007-D									

An ISO 9001 : 2008 company

**Corporate & Mktg. Office :** 165, G.I.D.C. Makarpura, Vadodara 390 010. **Tel. :** +91 - 265 - 2643550, 2646021.  
**Fax :** + 91 - 265 - 2641054 ■ **E-mail :** marketing@altopindustries.com

**Factory :** 392 , 419-A, GIDC, Makarpura, Vadodara - 390 010.  
**Tel. :** 0265-2658480 ■ **E-mail :** support@altopindustries.com

**MUMBAI :** 5, Turakhia Park Shopping Complex, Building No. 1, Next to Corporation Bank, M. G. Road, Kandivali (W), MUMBAI - 400 067. ■ **Tel. :** (022) 2806 6032 / 2806 6036 ■ **Fax :** (022) 2862 9113  
**Email :** bombay@altopindustries.com



**ALTOP Industries Ltd.**  
**PROCESS CONTROL INSTRUMENTATION**

CIN - U91110GJ1993PLC018831

<http://www.altopindustries.com>