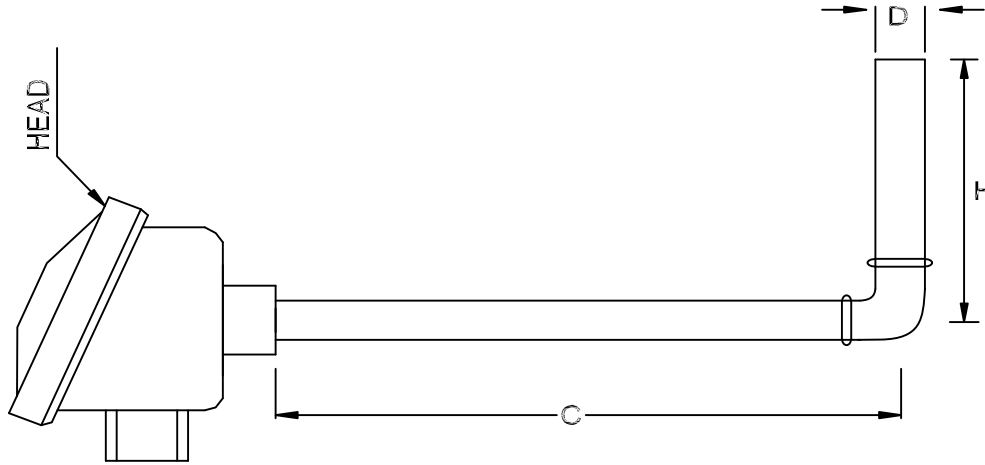


# "ANGLE TYPE" THERMOCOUPLE ATC 1007



Head	Cable Gland	Thermocouple	Accuracy
------	-------------	--------------	----------

Material	No. of Entries	Cable Entries Size
A C. Alu. WP	1 Single Entry	01 3/4" ET 02 1/2" NPT

A W. P. Single Compression Brass Ni Plated

ANSI MC 96.1  
A Standard  
B Special

Thermocouple Type	No. of Elements	Type of Junction	Insulation	Element Dia	Sheath MOC		Sheath DIA "D"	Sheath Length	
					Hot Arm	Cold Arm		"H" Hot Arm	"C" Cold Arm
J	S Single	0G	02 Beaded	10 Swg	03 SS 310	01 G.I	Specify mm	mm	mm
K	D Double	Grounded		12 Swg	04 SS 316	XX Others			
		UG		14 Swg	13 Inconel				
		Ungrounded		xx Others	600				

ATC 1007																			
----------	--	--	--	--	--	--	--	--	--	--	--	--	--	--	--	--	--	--	--

An ISO 9001 : 2008 company

**Corporate & Mktg. Office** : 165, G.I.D.C. Makarpura, Vadodara 390 010. **Tel.** : +91 - 265 - 2643550, 2646021.  
**Fax** : + 91 - 265 - 2641054 ■ **E-mail** : marketing@altopindustries.com

**Factory** : 392 , 419-A, GIDC, Makarpura, Vadodara - 390 010.  
**Tel.** : 0265-2658480 ■ **E-mail** : support@altopindustries.com

**MUMBAI** : 5, Turakhia Park, Shopping Complex, Building No. 1, Next to Corporation Bank, M. G. Road, Kandivali (W) MUMBAI - 400 067. ■ **Tel.** : (022) 2806 6032 / 2806 6036 ■ **Fax** : (022) 2862 9113  
**Email** : bombay@altopindustries.com

**ALTOP Industries Ltd.**  
 PROCESS CONTROL INSTRUMENTATION  
 CIN - U91110GJ1993PLC018831  
<http://www.altopindustries.com>