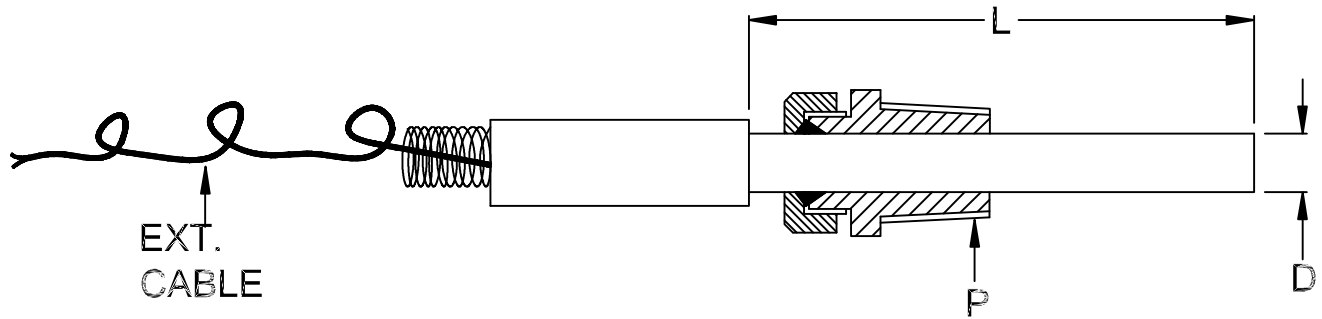


THERMOCOUPLE WITH SEALPOT ATC 1011



| Thermocouple Type | No. of Elements | Type of Junction | Insulation | Sheath MOC | Sheath DIA "D" | Sheath Length mm "L" | Cable | Cable Length | Process Connection "P" | Accuracy |
|---|-----------------|------------------|------------|------------|----------------|----------------------|-------|--------------|------------------------|---|
| J, K, T, E, N | | | | | | | | | | |
| S Single D Double | | | | | | | | | | |
| 0G Grounded UG Ungrounded | | | | | | | | | | |
| 01 Mineral Insulated | | | | | | | | | | |
| 03 SS 310 04 SS 316 13 Inconel 600 | | | | | | | | | | |
| 6 mm x others | | | | | | | | | | |
| _____ mm | | | | | | | | | | |
| FFS 1/20 Fibre / Fibre/ SS TFS 7/36 Teflon/Fibre/SS TT 7/36 Teflon/Teflon | | | | | | | | | | |
| _____ Mtr. | | | | | | | | | | |
| O None 02 1/2" BSP 02A 1/2" NPT X Others | | | | | | | | | | ANSI MC 96.1 A Standard B Special |
| ATC 1011 | | | | | | | | | | |

An ISO 9001 : 2008 company

Corporate & Mktg. Office : 165, G.I.D.C. Makarpura, Vadodara 390 010. **Tel. :** +91 - 265 - 2643550, 2646021.
Fax : + 91 - 265 - 2641054 ■ **E-mail :** marketing@altopindustries.com

Factory : 392 , 419-A, GIDC, Makarpura, Vadodara - 390 010.
Tel. : 0265-2658480 ■ **E-mail :** support@altopindustries.com

MUMBAI : 5, Turakhia Park, Shopping Complex, Building No. 1, Next to Corporation Bank, M. G. Road, Kandivali (W) MUMBAI - 400 067. ■ **Tel. :** (022) 2806 6032 / 2806 6036 ■ **Fax :** (022) 2862 9113
Email : bombay@altopindustries.com



ALTOP Industries Ltd.
 PROCESS CONTROL INSTRUMENTATION

CIN - U91110GJ1993PLC018831
<http://www.altopindustries.com>