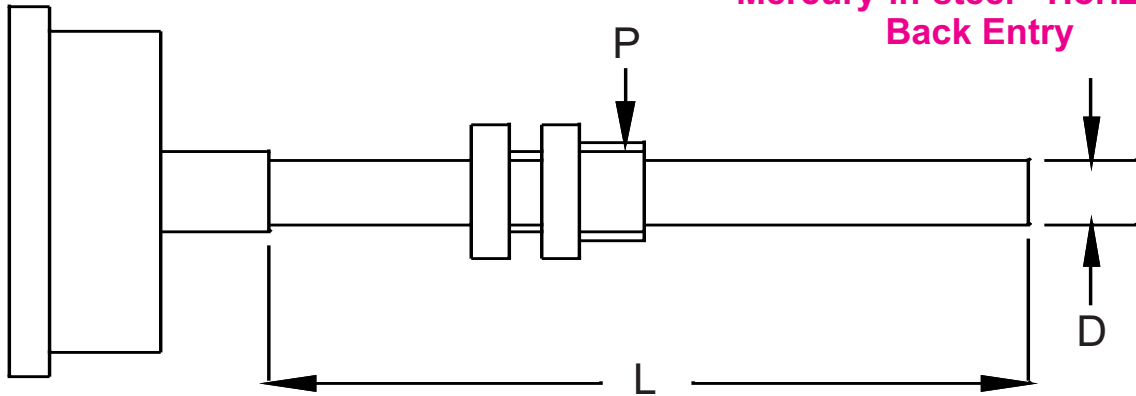


"ALTOP" DIAL THERMOMETER, STEM TYPE ATG 1001-A



Mercury-in-steel - Horizontal
Back Entry



Option : Glycerin Filled

Dial Size	Case & Bezel	Stem	Connection "P"	Temp. Range	Elec. Contact	Accuracy
-----------	--------------	------	----------------	-------------	---------------	----------

01 63 mm
02 100 mm
03 150 mm
04 250 mm

A Cast Aluminum
D SS 304
G SS 316

MATERIAL	DIA "D"	LENGTH "L"
01 SS 304	01 8mm	_____ mm
04 SS 316	02 10mm	
	03 12mm	
	04 1/4"	
	05 3/8"	
	06 1/2"	
	07 Other	

A -38 to +40 °C
B -20 to 80 °C
C 0 to 50 °C
D 0 to 100 °C
E 0 to 120 °C
F 0 to 150 °C
G 0 to 200 °C
H 0 to 250 °C
I 0 to 300 °C
J 0 to 350 °C
K 0 to 400 °C
L 0 to 500 °C
M 0 to 600 °C

02 1% (A to K)
03 1.5% (L to M)

02 1/2" BSP
02A 1/2" NPT
X Other

O NONE
01 1 N/O
02 2 N/O
03 1 N/C
04 2 N/C
05 1 N/O + 1 N/C
* Available for 4" & 6" Dial Size Only

01 Slide Type
200 mA at 230V AC
02 Magnetic Type
1 Amp at 230V AC

ATG
1001-A

Corporate & Mktg. Office : 165, G.I.D.C. Makarpura, Vadodara 390 010. Tel. : +91 - 265 - 2643550, 2646021.
■ Fax : + 91 - 265 - 2641054 ■ E-mail : marketing@altopindustries.com

Factory : 392 , 419-A, GIDC, Makarpura, Vadodara - 390 010.
■ Tel. : 0265-2658480 ■ E-mail : support@altopindustries.com

MUMBAI : 5, Turakhia Park Shopping Complex, Building No. 1, Next to Corporation Bank, M. G. Road, Kandivali (W), MUMBAI - 400 067. ■ Tel. : (022) 2806 6032 / 2806 6036 ■ Fax : (022) 2862 9113
■ Email : bombay@altopindustries.com



ALTOP Industries Ltd.

PROCESS CONTROL INSTRUMENTATION

CIN - U91110GJ1993PLC018831

<http://www.altopindustries.com>