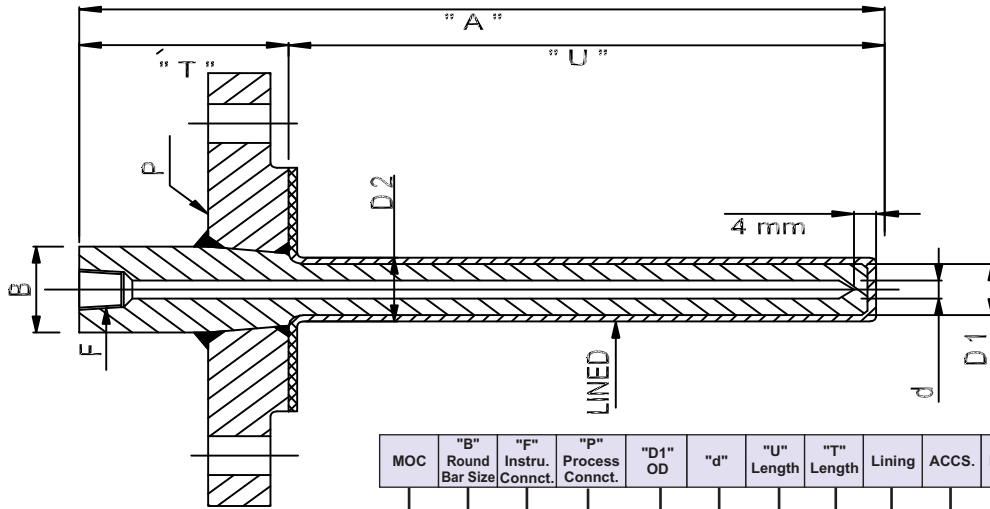


THERMOWELL SERIES ATW - 1008



BAR STOCK DRILLED FLANGED THERMOWELL WITH LINING



01	SS 304	07	SS 347	14	Inconel 825	20	Titanium
02	SS 304 L	08	SS 347 H	15	Incolloy 800	22	Kanthal
03	SS 310	10	SS 410	16	Monel 400	23	Brass
04	SS 316	11	SS 446	17	Nickle 200	24	Copper
05	SS 316 L	12	CS A105	18	Hastalloy B	xx	Others
06	SS 321	13	Inconel 600	19	Hastalloy C-276		

28	28 mm	34	34 mm
32	32 mm	xx	Others

01	1/2" BSP	12	3/8" NPT	# Female Thread
02	1/2" NPT	09	Others	
11	3/8" BSP			

19	19mm
21	21mm
xx	Others

MOC				SIZE			
01	SS 304	11	SS 446	1A	1" ASA 150#	3A	2" ASA 150#
02	SS 304 L	12	CS A105	1B	1" ASA 300#	3B	2" ASA 300#
03	SS 310	13	Inconel 600	1C	1" ASA 600#	3C	2" ASA 600#
04	SS 316	14	Inconel 825	2A	1 1/2" ASA 150#	3D	2" ASA 900#
05	SS 316 L	15	Incolloy 800	2B	1 1/2" ASA 300#	3E	2" ASA 1500#
06	SS 321	16	Monel 400	2C	1 1/2" ASA 600#	3F	2" ASA 2500#
07	SS 347	17	Nickle 200	2D	1 1/2" ASA 900#	09	Others
08	SS 347 H	18	Hastalloy B	2E	1 1/2" ASA 1500#		
10	SS 410	19	Hastalloy C-276	2F	1 1/2" ASA 2500#		
		xx	Others				

16	16mm	xx	Other
18	18mm		

07	7 mm	09	9 mm
08	8 mm	xx	Others

_____ mm (Max 350 mm)

01	50 mm
xx	Other

0T	Teflon
GL	PFA
LL	Lead - Lined
PV	PVDF - Lined
xx	Others

X	None
01	Plug and Chain
02	Copper Washer
xx	Others

Remark : Lining Thickness will be minimum 2mm

ATW										
1008										

Corporate & Mktg. Office : 165, G.I.D.C. Makarpura, Vadodara 390 010. Tel. : +91 - 265 - 2643550, 2646021.
 Fax : +91 - 265 - 2641054 E-mail : marketing@altopindustries.com

Factory : 392, 419-A, GIDC, Makarpura, Vadodara - 390 010.
 Tel. : 0265-2658480 E-mail : support@altopindustries.com

MUMBAI : 5, Turakhia Park, Shopping Complex, Building No. 1, Next to Corporation Bank, M. G. Road, Kandivali (W) MUMBAI - 400 067. Tel. : (022) 2806 6032 / 2806 6036 Fax : (022) 2862 9113
 Email : bombay@altopindustries.com

ALTOP Industries Ltd.
 PROCESS CONTROL INSTRUMENTATION
 CIN - U91110GJ1993PLC018831
<http://www.altopindustries.com>

An ISO 9001 : 2008 company